

# MAKE YOUR TRADE SHOW LIFE EASIER

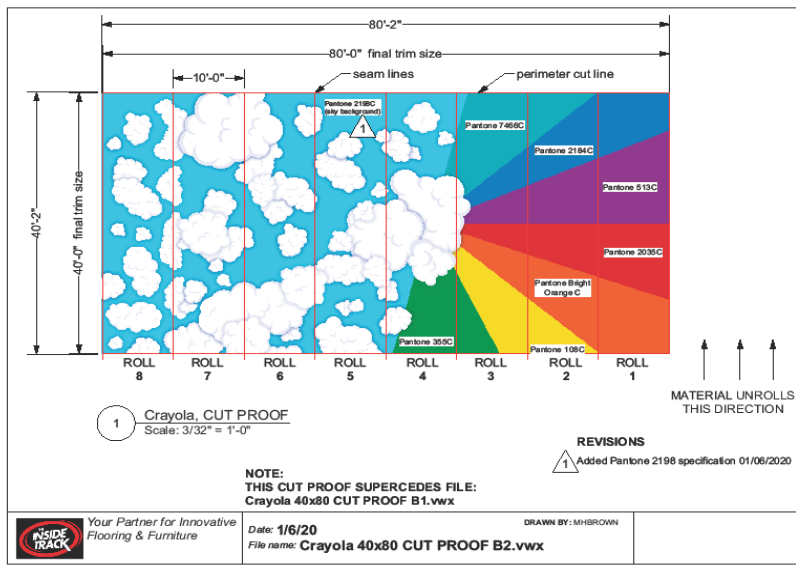
Flooring tips that every  
exhibit house team  
member should know



Your Partner for Innovative Flooring



# AVOID SURPRISES: SEND THE RENDERING



- Send the full booth rendering for all inlays and printed flooring.
- Add arrows to the flooring layout to show us how you want the flooring to unroll on show site.

# WHICH WAY ARE WE GOING?



Add an arrow on your layouts to show us the plank direction.

# JUST GIVE ME THE FACTS

Send us the show quick facts so  
we can keep an eye on your  
deadlines.

## Freeman<sup>TM</sup> Quick facts

**2024 NBAA-BACE Aircraft Display**  
October 22-24, 2024  
Henderson Executive Airport  
Henderson, NV

### Show schedule

#### Discount price deadline

To take advantage of advance order discount rates, place orders on FreemanOnline by September 17, 2024.

#### Exhibitor move-in

Tuesday, October 15, 2024	12:00 PM - 5:00 PM
Wednesday, October 16, 2024	8:00 AM - 5:00 PM
Thursday, October 17, 2024	8:00 AM - 5:00 PM
Friday, October 18, 2024	8:00 AM - 5:00 PM
Saturday, October 19, 2024	8:00 AM - 5:00 PM
Sunday, October 20, 2024	8:00 AM - 7:00 PM
Monday, October 21, 2024	8:00 AM - 3:00 PM

#### Exhibit hall hours

Tuesday, October 22, 2024	9:00 AM - 5:00 PM
Wednesday, October 23, 2024	9:00 AM - 5:00 PM
Thursday, October 24, 2024	9:00 AM - 3:00 PM

#### Exhibitor move-out

Thursday, October 24, 2024	3:00 PM - 8:00 PM
Friday, October 25, 2024	8:00 AM - 5:00 PM
Saturday, October 26, 2024	8:00 AM - 12:00 PM

Freeman will begin returning empty containers as soon as the aircraft are removed from the show space.

### Shipping and material handling

#### Warehouse shipping address:

Exhibiting Company Name / Booth Number  
2024 NBAA-BACE Aircraft Display  
C/O Freeman  
6675 W Sunset Rd  
Las Vegas, NV 89118  
USA

#### Warehouse shipping information

- Ship early to avoid delays and save money.
- Freeman will accept crated, boxed or skidded material beginning September 16, 2024 at the above address.
- Material arriving after October 8, 2024 will be received at the warehouse with an additional after deadline charge.
- Please note that the Freeman Warehouse does not accept uncrated freight (loose, pad-wrapped material and/or unskidded machinery), COD shipments, hazardous materials, freight requiring refrigerated or frozen storage, a single piece of freight weighing more than 5,000 pounds or a single piece of freight beyond the dimensions of 108"H x 93"W.
- Warehouse materials are accepted at the warehouse Monday through Friday between the hours of 7:00 AM - 7:30 PM subject to change.



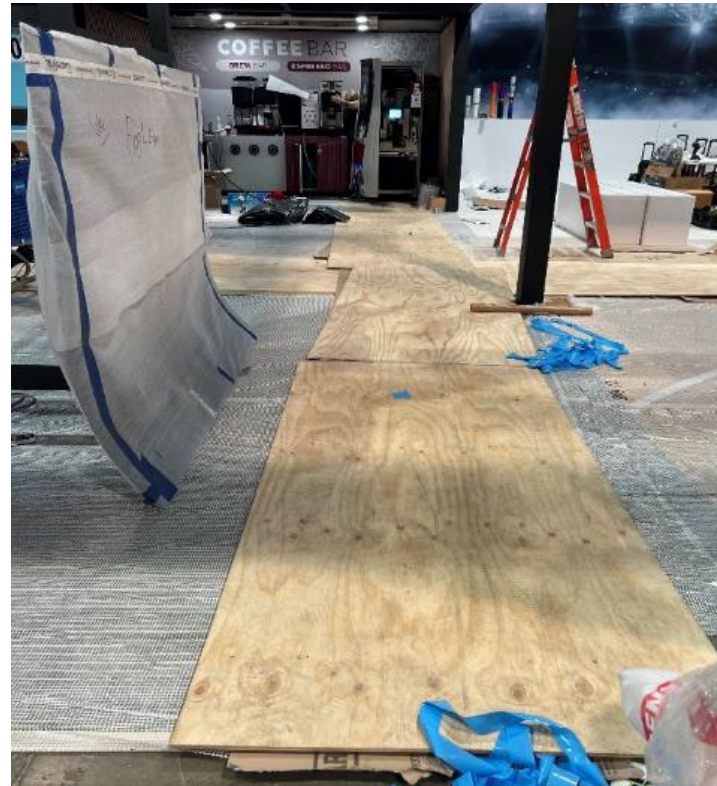
# BALLROOM CARPET CAN BE BRUTAL

Ballroom carpet **ALWAYS** needs sticky visqueen (aka construction film) before installation.



For rollable vinyl, place ½" plywood between the ¼" padding and rollable vinyl to create a solid subfloor.

# THAT WOOD HAVE BEEN NICE



- If you'll be wheeling AV cases into your booth, bring 4' x 8' sheets of plywood to place over the vinyl during install.
- Our EZ Down planks stand up to wheels and heels. These are a great choice when you have wheels in your booth.



# GUESS MY WEIGHT

28 oz. and 30 oz.  
carpet have  
multiple uses and  
are perfect for  
inlays.



Use 13 – 16 oz.  
carpet for aisle  
carpet. This is a  
great choice for  
covering all that  
bare concrete on  
the show floor.

# WALK THIS WAY . . .



We make carpet inlays easy to install with our easy-to-read layouts.

Attendees are drawn into an exhibit by paths made from rollable vinyl or carpet.





# DON'T GET TRASHED

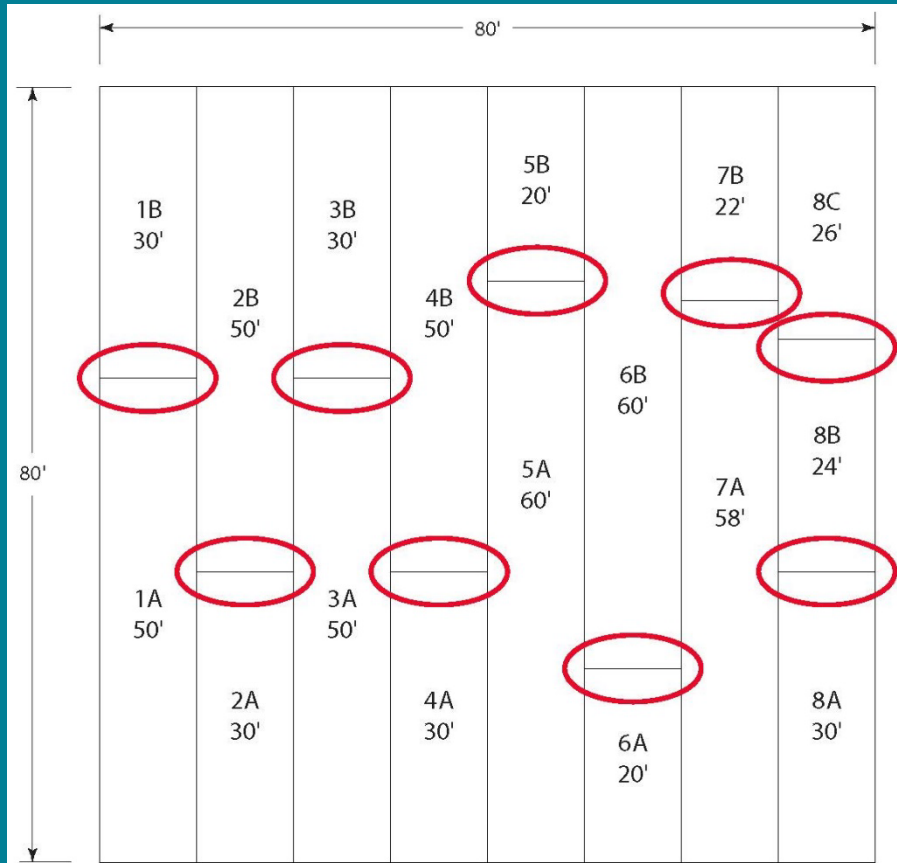
Don't want to ship flooring back from a show?



**RECYCLE IT INSTEAD**



We have recycling partners in Northern and Southern California, the Midwest, the Southwest and the South.



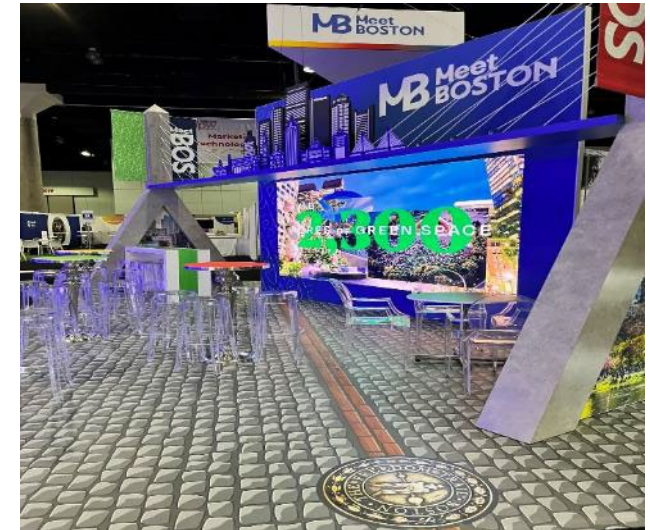
# SEAMS LIKE A LONGER INSTALL

Carpet and vinyl rolls can be as long as 80' to 100' and still be easy to maneuver on show site.

# EXPERIENTIAL MADE EASY



A picture is worth  
1,000 words (or  
booth visitors!)



We're an experiential industry, so  
if the floor needs to look like a  
runway, a forest, the moon or any  
other cool surface—we can do  
that!



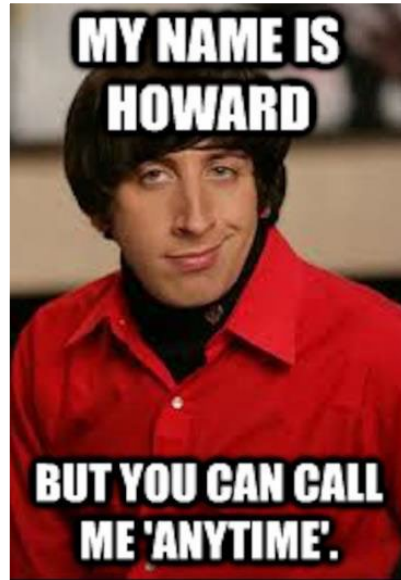
# YOU'VE GOT TO BE SKIDDING ME!



Skidding your flooring saves special handling charges by the general contractor and reduces the chance of your flooring rolls getting lost or separated at the advanced warehouse.

# “THAT SOUNDS LIKE A PHONE CALL”

Nothing saves you time and keeps your project from going off the rails better than a conversation with your internal team or your supply-side partners.



# MAKE YOUR TRADE SHOW LIFE EASIER

To request an estimate or place an order,  
call **404-876-5900** or email  
**office@theinsidetrackinc.com.**



*Your Partner for Innovative Flooring*

We appreciate you trusting us with your flooring,

Dave Sterne  
Founder & CEO  
The Inside Track, Inc.  
404-867-2144  
dsterne@theinsidetrackinc.com